

# 1 App installation

## Prerequisites:

Android 5 or higher operating system

Bluetooth

## Installation:

download the link [www.wtengineering.it/download/CPS/app\\_cps0623.apk](http://www.wtengineering.it/download/CPS/app_cps0623.apk) to your device.

If necessary allow the installation of third-party applications

If required, grant the requested permissions

At the end of the installation, the application launch icon will be created (CPS-Tech I).

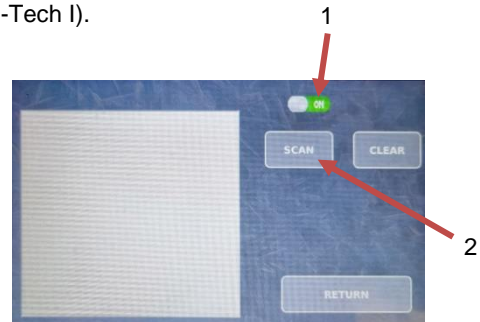
## Bluetooth pairing

Turn on bluetooth on your device and make it discoverable.

On the AGA go to MENU - CONFIGURATION and enter the password 1234

Activate Bluetooth communication (1)

Press SCAN (2)



Wait for END SCAN to appear above the window

The devices that can be paired appear in the window,

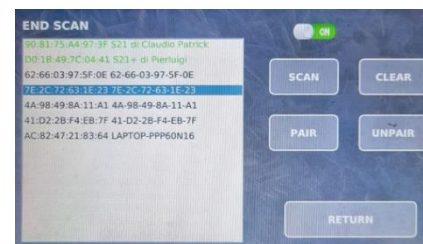
the devices that have already been paired in green

Select the device you want to pair

Press the PAIR button

The pairing request will appear on the device, accept it

Press RETURN to go home



## Configuration and operation of the App.

Launch the application on your device

Select Connection (1) at the bottom

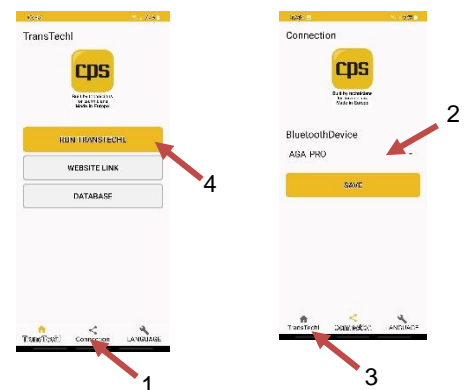
Select the Bluetooth connection with which the AGA is connected(2)

Save the choice (SAVE)

Return to the main screen (3)

Restart App. and Aga

Press the start button (4)



Press the connection button (5)

If everything has been configured correctly,  
the connection will be made and the Bluetooth icon on the machine  
will turn blue,  
then the first screen of the automatic cycle  
will appear both on the App and on the machine

